

**T**he touch screen system for all hospitality solutions:  
Fast Food, Café, Bistro, Restaurant, Bar, Night Club.

**EASY 2 TOUCH** links to full range of peripherals and  
back office stock control software

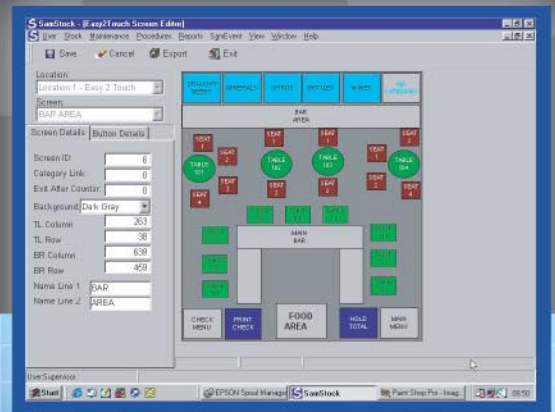


Now With New  
**Brighter**  
TFT Screen!

**EASY 2 TOUCH**



**Solid State technology with removable Disk on Chip for reliability. Comes complete with flexible built in hospitality software. 10.4" colour TFT touch panel, Ethernet network, 3 x serial ports, 1 x parallel port, cash drawer port, external VGA monitor port, PC keyboard port.**



**BUILT IN SOFTWARE PROVIDES:**

- 64 screens, up to 100 buttons per screen
- User definable button shape, colour & size
- Table layout facility, design your own restaurant
- Real time floating clerks and tables
- Clerks linked to default screens for speed
- Split bills by item and by seat
- Four separate account files with transfer ability
- Assign customer name to bar tabs, transfer to tables, then transfer to account
- Up to 4 timed periods with linked prices and screens
- Real time count of menu items advising on availability
- Stock control including recipes and cost analysis
- Touch edit facility, ideal for programming daily specials
- Different receipt and kitchen printer names
- Time and attendance facility

**< < < DIMENSIONS > > >**  
Size: W300mm x D225mm H130mm (adjustable)



**OPTIONS INCLUDE:**

- Two line 20 character LED display
- Dallas operator keys for fast and secure signing on
- Magnetic card reader for credit card transactions
- Thermal and dot matrix printers for receipt and kitchen
- Remote 2 line pole display
- Bar code scanner (available shortly)



- Simple to use software for PCs
- Single or Multiple Stock Locations
- Product, Staff and Cash Sales History
- Comprehensive Management Reports
- Stock Control and Price Maintenance
- Purchase Order and Delivery System
- Automatic Communication to Point of Sale
- Editing of screen layouts through Samstock

